

**PISTONS**  
**GLANDS**  
**MANIFOLDS**  
**HYDRAULIC COMPONENTS**

**Precision Machined Components Specialist**

Quality • Consistency • Range

# ER Techno: Excellence in Machined Parts

Established in 2016, ER Techno is a leading manufacturer and exporter exporter of high-quality machined parts. We specialize in Pistons, Glands, Manifolds, and Hydraulic Components, serving automotive OEMs.

Our machining division expands our product range, ensuring each part meets stringent quality standards. Backed by a dynamic team and advanced facilities in Manesar, Haryana, we deliver precision-engineered components worldwide.

At ER Techno, quality is our foundation, driven by innovation and dedication. We are your trusted partner in mechanical components.



## Setting Standards. Achieving Excellence

We aim to become a respected industry leader by setting exceptional standards in manufacturing and business processes. Our commitment to quality and innovation will set new benchmarks, enhancing our reputation and ensuring long-term success. We strive to consistently deliver excellence, driving growth and leadership in our product area.



## Precision. Performance. Partnership.

At ER Techno, our strength lies in five key pillars: Unmatched quality, timely delivery, prompt response, customer satisfaction, and competitive pricing.

We go beyond expectations with exceptional after-sales service, ensuring our clients receive not just top-tier products, but also the support they need every step of the way.



Quality • Consistency • Range

# ER Techno: Why Choose us?

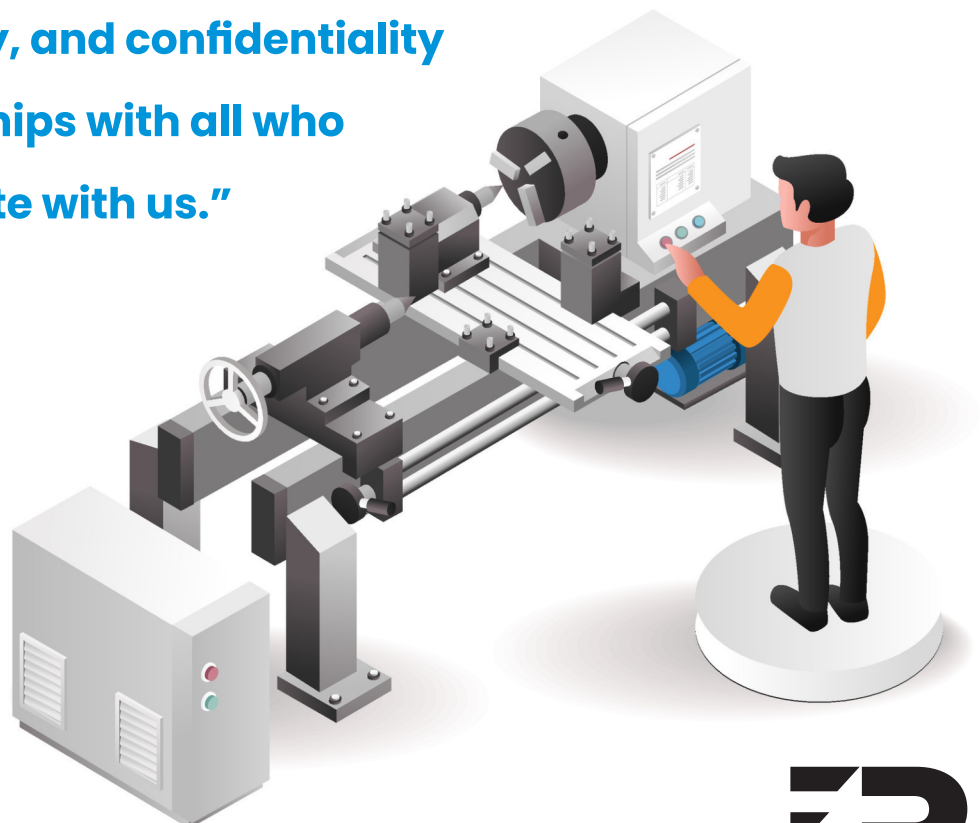
Starting from our strong foundations, this Code of Ethics ensures that our decisions and actions are guided by core values. It aims to reduce uncertainties, guide our behavior, and provide clear answers to those connected with our company. Now, more than ever, it is crucial to reaffirm our ethical commitment and clearly express our shared principles, values, and responsibilities. These principles shape our interactions with customers, suppliers, employees, and all stakeholders, reinforcing why ER Techno is the trusted choice for those seeking a reliable and ethical partner.

## Your Trusted Source for Precision Engineered Machine Parts:

- State-of-the-art facility with the latest machinery and equipment.
- In-house machining with advanced CNCs, VMCs, and Sliding heads for precision components.
- Custom product development with thorough QA based on client specs.
- Modern quality control lab with up-to-date inspection tools.



**“Reliability, integrity, and confidentiality  
define our relationships with all who  
choose to collaborate with us.”**



Quality • Consistency • Range

**ER**  
TECHNO

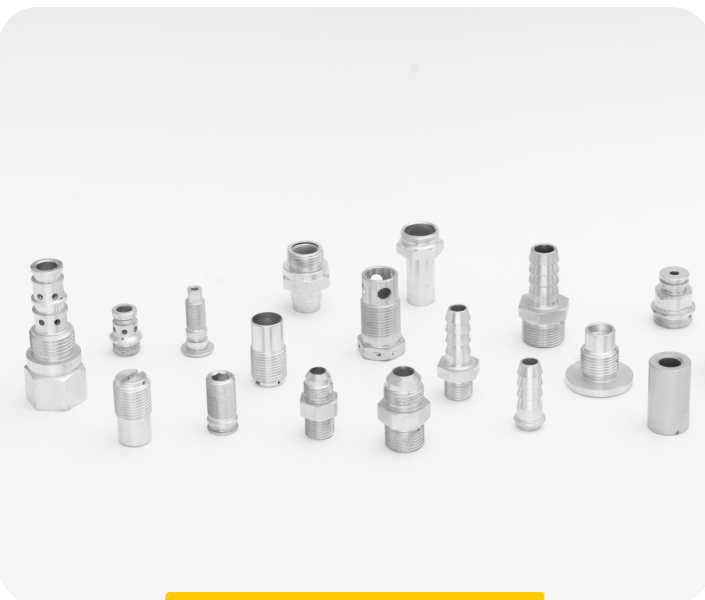
# Our Products

All our products are made on design and in close collaboration with our customers. Technological innovation, customer service and product and process quality have always been the basis of our growth strategy.

## Pistons & Glands



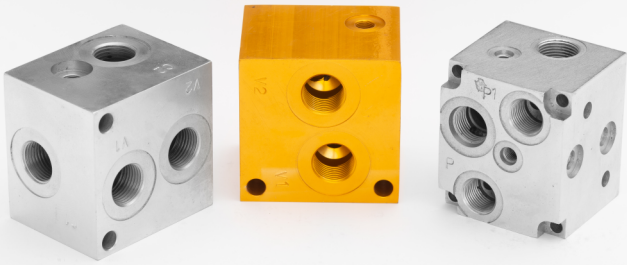
## Hydraulic Components



Quality • Consistency • Range



## Manifolds



## Aluminium Machined Parts



**Reliability, honesty, & confidentiality set us apart in our relationships with all who wish to collaborate with our organization.**

## Plugs & Connectors



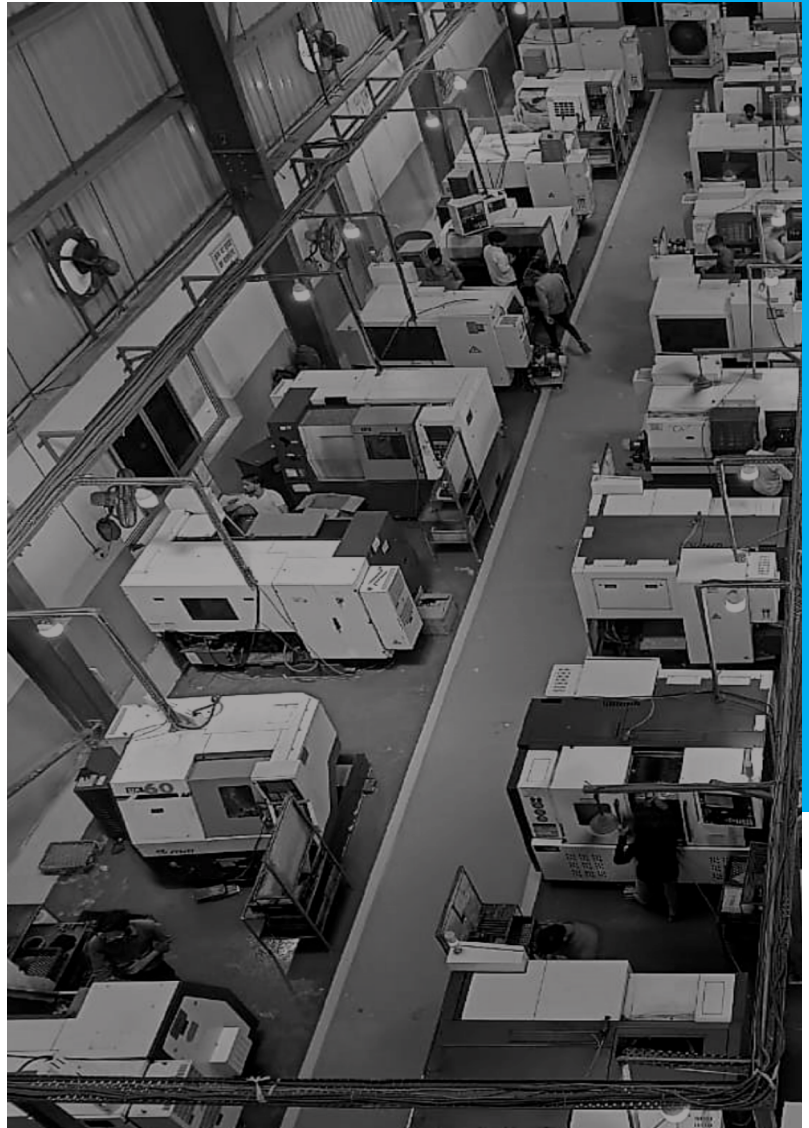
# ER Techno: Manufacturing



ER Techno's manufacturing facilities are equipped with advanced machinery and a cutting-edge R&D testing bench, reflecting our commitment to producing top-quality products. Our skilled employees and experienced engineers ensure that we consistently meet international standards and stay competitive in the global market through continuous upgrades with the latest technologies.

Our world-class equipment includes an in-house CNC system for precise and efficient manufacturing, a VMC with a 4th axis production system for complex machining, and sliding head machines for high-precision turning. Additionally, our circular and band saws deliver accurate material cutting, while drilling machines and Mntr (DRO) machines enhance precision and efficiency in production.

These advanced tools form the foundation of ER Techno's manufacturing excellence, enabling us to consistently deliver high-quality products.



**Our team designs solutions  
that meet the demands of  
today and the innovations  
of tomorrow.**

## Machining Facilities

- CNC TURNING CENTER
- VERTICAL MACHINING CENTER(VMC)
- VERTICAL MACHINING CENTER(VMC)-4TH AXIS
- TURNMILL CENTER
- MICRO DRILL
- MNTR
- THREAD ROLLING
- CIRCULAR SAW & BANDSAW
- SLIDING HEAD MACHINE-DIA 32

Quality • Consistency • Range

# ER Techno: Quality Assurance

The Management has chosen to comply with the ISO 9001: 2015 & IATF 16949:2016 standard and the continuous improvement deriving from its application as a management tool for achieving the goals. The General Management performs periodic reviews, promotes improvement actions for the following period and ascertains the continued suitability of this policy.

**Our quality policy ensures customer satisfaction, trust, loyalty, and regulatory compliance.**

- updated and adequate regulatory and technological knowledge;  
fulfilment of safety, hygiene and environmental protection requirements established by the laws in force;
- achieving expectations of suppliers and business partners in order to achieve high levels of collaboration for the purpose of common growth
- Involving all staff in a team-driven approach, fostering success, security, and fulfilment.
- Optimal management of financial, infrastructural, human, and environmental resources to ensure continuous company growth and success.



**We are committed to manufacturing quality products you can trust.**

## ABS Quality Evaluations

### Certificate Of Conformance

This is to certify that the Quality Management System of:

**ER Techno**

**Plot No. 619, Sector 8,  
IMT Manesar,  
Gurugram, Haryana 122052  
India**

has been assessed by ABS Quality Evaluations, Inc. and found to be in conformance with the requirements set forth by:  
**ISO 9001:2015**

The Quality Management System is applicable to:

**MANUFACTURE OF PRECISION MACHINED COMPONENTS**

This certificate may be found on the ABS QE Website ([www.abs-qe.com](http://www.abs-qe.com)). For certificates issued in the People's Republic of China information may also be verified on the CNCA website ([www.cnca.gov.cn](http://www.cnca.gov.cn)).

Certificate No: 66286  
Effective Date: 25 August 2023  
Expiration Date: 24 August 2026  
Revision Date: 25 August 2023

*Dominic Townsend*  
Dominic Townsend, President



Validity of this certificate is based on the successful completion of the periodic surveillance audits of the management system defined by the above scope and is contingent upon

ABS Quality Evaluations, Inc. 1701 City Plaza Drive, Spring, TX 77389, U.S.A.

Copyright 2011-2023 ABS Quality Evaluations, Inc. All rights reserved.

## ABS Quality Evaluations

### Certificate Of Conformance

This is to certify that the Quality Management System of:

**ER Techno**

**Plot No. 619, Sector 8,  
IMT Manesar,  
Gurugram, Haryana 122052  
India**

**US# YZ3K93**

has been assessed by ABS Quality Evaluations, Inc. and found to be in conformance with the requirements set forth by:  
**IATF 16949:2016**

The Quality Management System is applicable to:

**MANUFACTURE OF PRECISION MACHINED COMPONENTS  
(EXCLUDING PRODUCT DESIGN IATF 16949:2016 CLAUSE 8.3)**

Certificate No: 66201  
Effective Date: 25 August 2023  
Expiration Date: 24 August 2026  
Revision Date: 25 August 2023  
IATF No: 0481547

*Dominic Townsend*  
Dominic Townsend, President



Validity of this certificate is based on the successful completion of the periodic surveillance audits of the management system defined by the above scope and is contingent upon

ABS Quality Evaluations, Inc. 1701 City Plaza Drive, Spring, TX 77389, U.S.A.

Copyright 2011-2023 ABS Quality Evaluations, Inc. All rights reserved.

Quality • Consistency • Range



**INDUSTRIAL UNIT**

PLOT NO:619, SECTOR-8 IMT MANESAR-GURGAON, HARYANA-INDIA-122050

**PHONE:** 0124-4053570 | **EMAIL ID:** INFO@ERTECHNO.IN | **MAIL US:** INFO@ERTECHNO.IN | **WEB:** ERTECHNO.IN